

FOR ART'S SAKE  
LONDON



A VERY BRITISH  
HOLIDAY  
AW22 LOOKBOOK

Introducing London-based eyewear brand, For Art's Sake AW22 collection

# A VERY BRITISH HOLIDAY

FOR ART'S SAKE  
LONDON

[WATCH THE CAMPAIGN VIDEO HERE](#)



Identifying For Art's Sake's British heritage, the Autumn Winter 2022 collection, A Very British Holiday, pays homage to contemporary designs and experimental shapes through unique details and luxurious materials. The cinematic collection signifies the brand's sought-after and quintessentially British aesthetic.

Expect fine materials such as 18-karat gold, rose gold and palladium plating and plant-based acetate distinguished by iconic FAS details, daring silhouettes and bold tints.

[www.fasforartssake.com](http://www.fasforartssake.com)

FAS



**SUNGLASSES**  
A VERY BRITISH HOLIDAY

**SUNGLASSES**  
A VERY BRITISH HOLIDAY

MUST HAVE

STYLE: **MORITZ** / 4 SKU



SC1 Moritz Black / Black tinted lens



SC2 Moritz Champagne / Champagne gradient lens



SC3 Moritz Amber / Amber tinted lens



SC4 Moritz Green / Green tinted lens



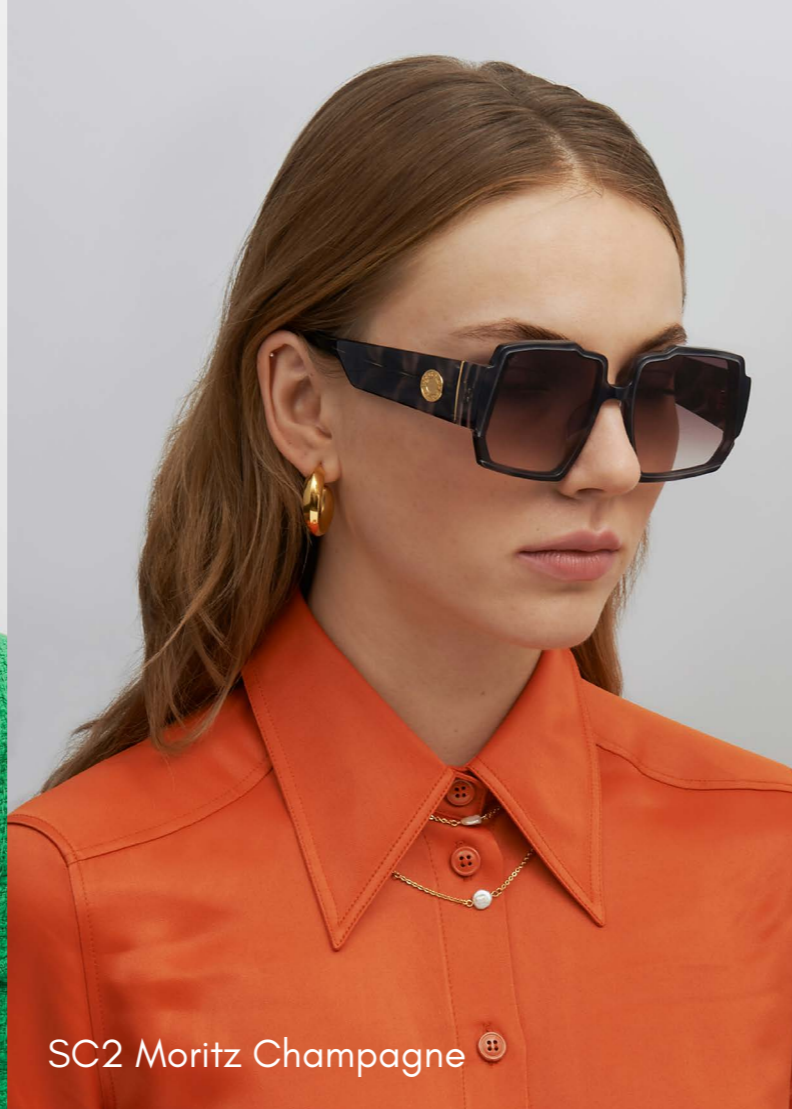
SC3 Moritz Amber



SC1 Moritz Black



SC4 Moritz Green



SC2 Moritz Champagne

FRAME	Plant-based acetate. Stainless steel core. <b>SC2</b> - Newly developed grey tortoiseshell design.
LENSES	Ultra-lightweight Nylon lenses / Anti-reflective coating / 100% UVA & UVB protection. <b>SC1 / SC3 / SC4</b> - Tinted lenses. <b>SC2</b> - Gradient lenses
DETAILING	18-karat gold plated logo inlay on temples.
MEASUREMENTS	56mm - 17mm - 145mm
WEIGHT	56g

STYLE: **CAROUSEL** / 4 SKU



SA1 Carousel Black



SA3 Carousel Topaz



SA1 Carousel Black / Black tinted lens



SA2 Carousel Champagne / Champagne gradient lens



SA3 Carousel Topaz / Topaz gradient lens



SA4 Carousel Pink / Pink gradient lens



SA2 Carousel Champagne



SA4 Carousel Pink

FRAME	<p><b>SA1</b> - Matte-black handpainted stainless steel</p> <p><b>SA2</b> - 18-karat gold plated stainless steel</p> <p><b>SA3</b> - Palladium-plated stainless steel</p> <p><b>SA4</b> - Rose-gold plated stainless steel</p>
LENSES	<p>Ultra-lightweight Nylon lenses / Anti-reflective coating / 100% UVA &amp; UVB protection.</p> <p><b>SA1</b> - Tinted lenses. <b>SA2 / SA3 / SA4</b> - Gradient lenses</p>
NOSE PADS	<p>Hypoallergenic &amp; make-up resistant white jadestone nose pads.</p> <p><b>SA1</b> - Black jadestone nose pads.</p> <p>Adjustable to fit all face shapes.</p>
DETAILING	Intricate cut-out framework and twisted temples
MEASUREMENTS	54mm - 21mm - 145mm
WEIGHT	31g

MUST HAVE

STYLE: **SATURDAY** / 4 SKU



SD1 Saturday Black / Black tinted lens

SD2 Saturday Champagne / Champagne gradient lens



SD3 Saturday Ivory / Black tinted lens

SD4 Saturday Blue / Black tinted lens



FRAME	Plant-based acetate. Stainless steel core.
LENSES	Ultra-lightweight Nylon lenses / Anti-reflective coating / 100% UVA & UVB protection. <b>SD1 / SD3 / SD4</b> - Tinted lenses. <b>SD2</b> - Gradient lenses
DETAILING	18-karat gold plated frame pin. Cut-out arms.
MEASUREMENTS	58mm - 12mm - 145mm
WEIGHT	45g

SD2 Saturday Champagne

SD1 Saturday Black

SD4 Saturday Blue

SD3 Saturday Ivory



SC1 MORITZ styled with VX031 MOON earrings



LEFT TO RIGHT: SG2 BOLT, SD3 SATURDAY, SC3 MORITZ

MUST HAVE

STYLE: **RIVERSIDE** / 4 SKU



SF1 Riverside Black



SF4 Riverside Navy



SF1 Riverside Black / Black tinted lens



SF2 Riverside Champagne / Champagne gradient lens



SF3 Riverside Green / Green tinted lens



SF4 Riverside Navy / Blue gradient lens



SF2 Riverside Champagne



SF3 Riverside Green

FRAME	Plant-based acetate. Stainless steel core.
LENSES	Ultra-lightweight Nylon lenses / Anti-reflective coating / 100% UVA & UVB protection. <b>SF1 / SF3</b> - Tinted lenses. <b>SF2 / SF4</b> - Gradient lenses
DETAILING	18-karat gold plated temple and arm inserts
MEASUREMENTS	51mm - 18mm - 145mm
WEIGHT	44g



MUST HAVE

STYLE: **BOLT** / 4 SKU



SG2 Bolt Champagne



SG3 Bolt Pink



SG1 Bolt Black / Black tinted lens



SG2 Bolt Champagne / Champagne gradient lens



SG3 Bolt Pink / Champagne gradient lens



SG4 Bolt Navy / Blue gradient lens



SG1 Bolt Black



SG4 Bolt Navy

FRAME	Plant-based acetate. Stainless steel core.
LENSES	Ultra-lightweight Nylon lenses / Anti-reflective coating / 100% UVA & UVB protection. <b>SG1</b> - Tinted lenses. <b>SG2 / SG3 / SG4</b> - Gradient lenses
DETAILING	18-karat gold plated iconic FAS chain temple
MEASUREMENTS	54mm - 20mm - 145mm
WEIGHT	49g

MUST HAVE

STYLE: CINNAMON / 4 SKU



SH2 Cinnamon Champagne



SH1 Cinnamon Black



SH1 Cinnamon Black / Black tinted lens



SH2 Cinnamon Champagne / Champagne gradient lens



SH3 Cinnamon Navy / Blue gradient lens



SH4 Cinnamon Green / Green tinted lens



SH3 Cinnamon Navy



SH4 Cinnamon Green

FRAME	Plant-based acetate. Stainless steel core. <b>SH3</b> - Newly developed grey tortoiseshell design.
LENSES	Ultra-lightweight Nylon lenses / Anti-reflective coating / 100% UVA & UVB protection. <b>SH1 / SH4</b> - Tinted lenses. <b>SH2 / SH3</b> - Gradient lenses
DETAILING	18-karat gold plated organic twisted arms. Faux pearl temple pin.
MEASUREMENTS	57mm - 18mm - 145mm
WEIGHT	26g



LEFT: SC3 MORTIZ styled with VX041 OVAL earrings & YN0131-420 LANGDON necklace. RIGHT: SH2 CINNAMON styled with CH-091 WIMBLEDON eyewear chain, VX051 BAMBOO earrings & YN0141-430 TILBURY necklace



SJ2 PRIMROSE styled with VX041 OVAL earrings

MUST HAVE

STYLE: **PRIMROSE** / 4 SKU



SJ1 Primrose Black



SJ2 Primrose Champagne



SJ1 Primrose Black / Black gradient lens



SJ2 Primrose Champagne / Champagne gradient lens



SJ3 Primrose Green / Green tinted lens



SJ4 Primrose White / Black tinted lens



SJ3 Primrose Green



SJ4 Primrose White

FRAME	Plant-based acetate. Stainless steel core. <b>SJ2 / SJ3</b> - Tortoiseshell design.
LENSES	Ultra-lightweight Nylon lenses / Anti-reflective coating / 100% UVA & UVB protection. <b>SJ1 / SJ2</b> - Gradient lenses. <b>SJ3 / SJ4</b> - Tinted lenses
DETAILING	18-karat gold plated organic twisted arms. Faux pearl temple pin.
MEASUREMENTS	52mm - 19mm - 145mm
WEIGHT	32g

MUST HAVE

STYLE: **MUSE** / 4 SKU



SK1 Muse Black



SK2 Muse Champagne



SK1 Muse Black / Black gradient lens



SK2 Muse Champagne / Champagne gradient lens



SK3 Muse Green / Green tinted lens



SK4 Muse Nude / Black tinted lens



SK3 Muse Green



SK4 Muse Nude

FRAME	Plant-based acetate. Stainless steel core. <b>SK1 / SK2</b> - Two-tone tortoiseshell.
LENSES	Ultra-lightweight Nylon lenses / Anti-reflective coating / 100% UVA & UVB protection. <b>SK1 / SK2</b> - Gradient lenses. <b>SK3/ SK4</b> - Tinted lenses
DETAILING	Ornate 18-karat gold plated temple.
MEASUREMENTS	58mm - 19mm - 145mm
WEIGHT	46g



SK4 MUSE styled with VX041 OVAL earrings & YN0141-430 TILBURY necklace



SD1 SATURDAY styled with VX021 WAVE earrings & YN0141-430 TILBURY necklace

STYLE: **SEASIDE** / 4 SKU



SP1 Seaside Black



SP2 Seaside Champagne



SP1 Seaside Black / Black tinted lens



SP2 Seaside Champagne / Champagne gradient lens



SP3 Seaside Green / Black tinted lens



SP4 Seaside Nude / Black tinted lens



SP3 Seaside Green



SP4 Seaside Nude

FRAME	Plant-based acetate. Stainless steel core.
LENSES	Ultra-lightweight Nylon lenses / Anti-reflective coating / 100% UVA & UVB protection. <b>SP2</b> - Gradient lenses.
DETAILING	<b>SP1</b> - Ornate palladium plated temple. <b>SP2</b> - Ornate, matte 18-karat gold plated temple.
MEASUREMENTS	58mm - 19mm - 145mm
WEIGHT	46g



**OPTICALS**

A VERY BRITISH HOLIDAY



**OPTICALS**

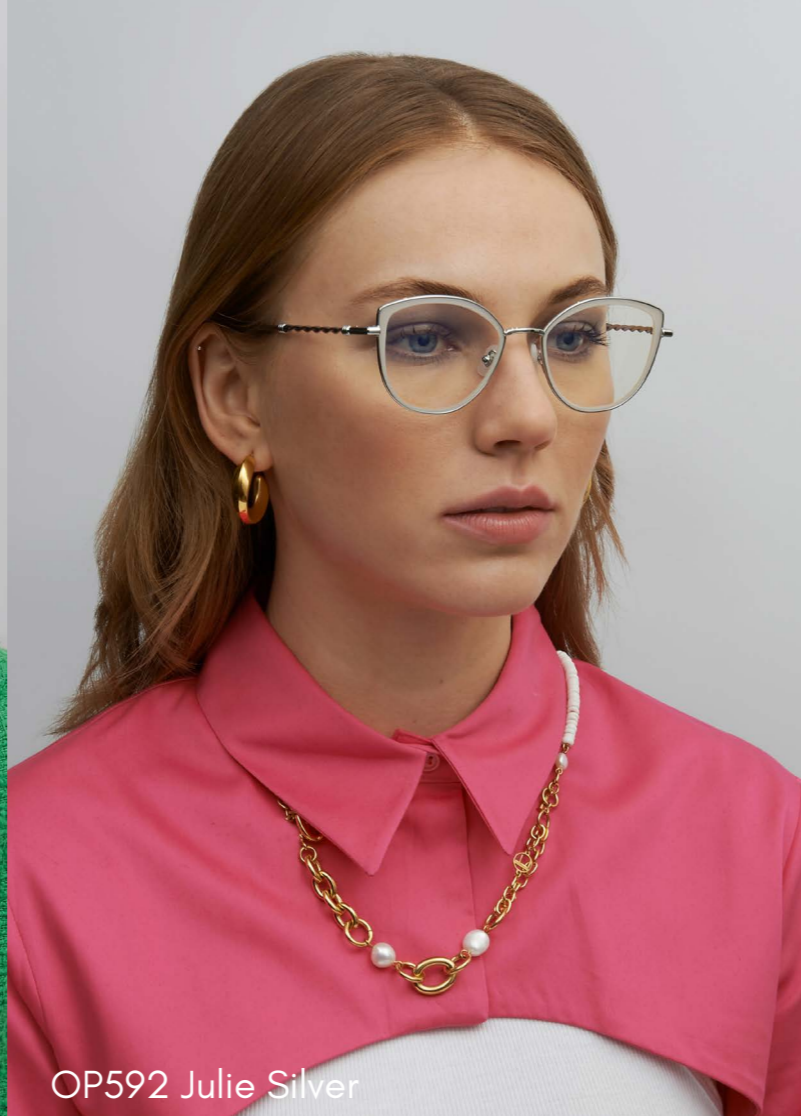
A VERY BRITISH HOLIDAY



STYLE: **JULIE** / 4 SKU



OP593 Julie Black



OP592 Julie Silver



OP591 Julie Gold



OP592 Julie Silver



OP593 Julie Black



OP594 Julie Pink



OP591 Julie Gold



OP594 Julie Pink

FRAME	<b>OP591 / OP593 / OP594</b> - 18-karat gold plated / Stainless steel core / Electro-plating. <b>OP592</b> - Palladium plating / Stainless steel core / Electro-plating.
LENSES	Ultra-lightweight Nylon lenses / Anti-reflective coating / Blue-light filtered lenses / 100% UVA & UVB protection.
NOSE PADS	Hypoallergenic & make-up resistant white jadestone nose pads.
DETAILING	Grecian-style twisted arms . <b>OP591 / OP592 / OP593</b> - handpainted enamel lens trim. <b>OP594</b> - transparent pink acetate lens trim.
MEASUREMENTS	53mm - 18mm - 145mm
WEIGHT	28g

MINIMALISTIC

STYLE: **GRACE** / 4 SKU



OP611 Grace Black



OP612 Grace Brown



OP613 Grace Green



OP614 Grace Pink



OP611 Grace Black



OP612 Grace Champagne



OP613 Grace Green



OP614 Grace Pink

FRAME	<b>OP611 / OP612 / OP613</b> - 18-karat gold plated / Stainless steel core / Electro-plating. <b>OP614</b> - Rose-gold plating / Stainless steel core / Electro-plating.
LENSES	Ultra-lightweight Nylon lenses / Anti-reflective coating / Blue-light filtered lenses / 100% UVA & UVB protection.
NOSE PADS	Hypoallergenic & make-up resistant white jadestone nose pads.
DETAILING	Plant-based acetate arms.
MEASUREMENTS	52mm - 20mm - 145mm
WEIGHT	28g



OP573 GENIUS TWO styled with VX051 BAMBOO earrings



TOP: JULIE OP591 styled with VX051 BAMBOO earrings. MIDDLE: GENIUS TWO OP574 styled with YN0141-430 TILBURY necklace & VX011 DAHLIA earrings. BOTTOM: OP621 WINDSOR styled with VX021 WAVE earrings

BEST-SELLER  
REINVENTED

STYLE: **GENIUS TWO** / 4 SKU



OP571 Genius Two Black



OP572 Genius Two Gold



OP571 Genius Two Black



OP572 Genius Two Gold



OP573 Genius Two Silver



OP574 Genius Two Rose



OP573 Genius Two Silver



OP574 Genius Two Rose

FRAME	<b>OP571 / OP572</b> - 18-karat gold plated / Stainless steel core / Electro-plating. <b>OP573</b> - Palladium plating / Stainless steel core / Electro-plating. <b>OP574</b> - Rose-gold plating / Stainless steel core / Electro-plating.
LENSES	Ultra-lightweight Nylon lenses / Anti-reflective coating / Blue-light filtered lenses / 100% UVA & UVB protection.
NOSE PADS	Hypoallergenic & make-up resistant white jadestone nose pads.
DETAILING	Geometric aviator frame. <b>OP571</b> - handpainted enamel frame
MEASUREMENTS	56mm - 18mm - 145mm
WEIGHT	28g



OP574 GENIUS TWO styled with VX021 WAVE earrings



OP614 GRACE styled with VX021 WAVE earrings & YN0111-385 KENWOOD necklace



OP621 Windsor Black



OP622 Windsor Brown

STYLE: **WINDSOR** / 4 SKU



OP621 Windsor Black



OP622 Windsor Brown



OP623 Windsor Ash



OP624 Windsor Silver



OP623 Windsor Ash



OP624 Windsor Silver

FRAME	<b>OP621 / OP622 / OP623</b> - 18-karat gold plated / Stainless steel core / Electro-plating. <b>OP624</b> - Palladium plating / Stainless steel core / Electro-plating.
LENSES	Ultra-lightweight Nylon lenses / Anti-reflective coating / Blue-light filtered lenses / 100% UVA & UVB protection.
NOSE PADS	Hypoallergenic & make-up resistant white jadestone nose pads.
DETAILING	Handpainted enamel lens trim.
MEASUREMENTS	54mm - 17mm - 145mm
WEIGHT	30g

BEST-SELLER  
REINVENTED

STYLE: **PARIS TWO** / 4 SKU



OP581 Paris Two Black



OP582 Paris Two Brown



OP581 Paris Two Black



OP582 Paris Two Brown



OP583 Paris Two Pink



OP584 Paris Two Green



OP583 Paris Two Pink



OP584 Paris Two Green

FRAME	Planted-based acetate. 18-karat gold plated arms / Stainless steel core / Electro-plating.
LENSES	Ultra-lightweight Nylon lenses / Anti-reflective coating / Blue-light filtered lenses / 100% UVA & UVB protection.
DETAILING	<b>OP581 / OP584</b> - Glossy acetate <b>OP582</b> - Tortoiseshell acetate <b>OP583</b> - Translucent acetate
MEASUREMENTS	56mm - 18mm - 145mm
WEIGHT	30g



**EYEWEAR CHAINS**  
A VERY BRITISH HOLIDAY



**EYEWEAR CHAINS**  
A VERY BRITISH HOLIDAY



STYLE: **BELGRAVIA** / 2 SKU



CH-131 Belgravia



CH-131 Belgravia Gold



CH-132 Belgravia Silver

CHAIN	<b>CH-131</b> - 18-karat gold plated stainless steel. <b>CH-132</b> - Palladium plated stainless steel.
DETAILS	Dainty flat-curb chain. Four freshwater pearl drops. Signature logo charm.
FEATURES	Spring-ring fastening. Designed to be detached from your eyewear chain and worn as a necklace. Optional rubber loop grips.
MEASUREMENTS	760mm
WEIGHT	13.2g

STYLE: **BRIXTON** / 2 SKU



CH-081 Brixton Gold



CH-082 Brixton Silver

CHAIN	<b>CH-081</b> - 18-karat gold plated stainless steel. <b>CH-082</b> - Palladium plated stainless steel.
DETAILS	Delicate cable chain. Moon and star-shaped charms unveiling a single fresh-water pearl. Signature logo charm.
FEATURES	Spring-ring fastening. Designed to be detached from your eyewear chain and worn as a necklace. Optional rubber loop grips.
MEASUREMENTS	760mm
WEIGHT	8.5g

CH-081 Brixton

STYLE: **HACKNEY** / 2 SKU



CH-122  
Hackney



CH-121 Hackney Gold



CH-122 Hackney Silver

CHAIN	<b>CH-121</b> - 18-karat gold plated stainless steel. <b>CH-122</b> - Palladium plated stainless steel.
DETAILS	Contrasting two-chain construction. Signature logo charm.
FEATURES	Lobster -claw fastening. Designed to be detached from your eyewear chain and worn as a necklace. Optional rubber loop grips.
MEASUREMENTS	760mm
WEIGHT	27.8g

STYLE: **HAMPSTEAD** / 1 SKU



CH-091 Hampstead Gold

CHAIN	18-karat gold plated stainless steel.
DETAILS	Delicate cable chain. Four geometric charms and a lustrous freshwater pearl. Signature logo charm.
FEATURES	Lobster -claw fastening. Designed to be detached from your eyewear chain and worn as a necklace. Optional rubber loop grips.
MEASUREMENTS	760mm
WEIGHT	8g

CH-111  
Little Venice

STYLE: **LITTLE VENICE** / 2 SKU



CH-111 Little Venice Gold



CH-112 Little Venice Silver

CHAIN	<b>CH-111</b> - 18-karat gold plated stainless steel. <b>CH-112</b> - Palladium plated stainless steel.
DETAILS	Delicate wheat chain. Two star-shaped charms. Signature logo charm.
FEATURES	Designed to be detached from your eyewear chain and worn as a necklace. Lobster claw fastening, optional rubber-loop grips. T-bar fastening when worn as a necklace.
MEASUREMENTS	760mm
WEIGHT	10g

STYLE: **WIMBLEDON** / 1 SKU



CH-102 Wimbledon Silver

CHAIN	Palladium plated stainless steel.
DETAILS	Delicate cable chain. four zircon stones and a single freshwater pearl. Signature logo charm.
FEATURES	Lobster -claw fastening. Designed to be detached from your eyewear chain and worn as a necklace. Optional rubber loop grips.
MEASUREMENTS	760mm
WEIGHT	9g



CH-102 Wimbledon

# CONTACT US

A VERY BRITISH HOLIDAY

FOR ART'S SAKE  
LONDON

4 offices & distribution centres across the globe, and growing  
**STRONG**

**Wholesale Office London (UK) & The Netherlands:**

+44 (0)20 3004 9679

**Wholesale Customer Service WhatsApp (International):**

+44 7465230018

**Wholesale Customer Service WhatsApp (Europe):**

+31 6 3886 3497

**Email:**

sales@fasforartssake.com

**Wholesale Customer Service WeChat ID:**

forartssakechina



**Request to access our wholesale platform:**

[www.fasorder.com](http://www.fasorder.com)

**PR:**

pr@fasforartssake.com

**Follow us**

IG: @forartssake

Facebook: forartssakeeyewear

Youtube: For Art's Sake Official

Pinterest: forartssake\_official

[www.fasforartssake.com](http://www.fasforartssake.com)



FOR ART'S SAKE  
LONDON